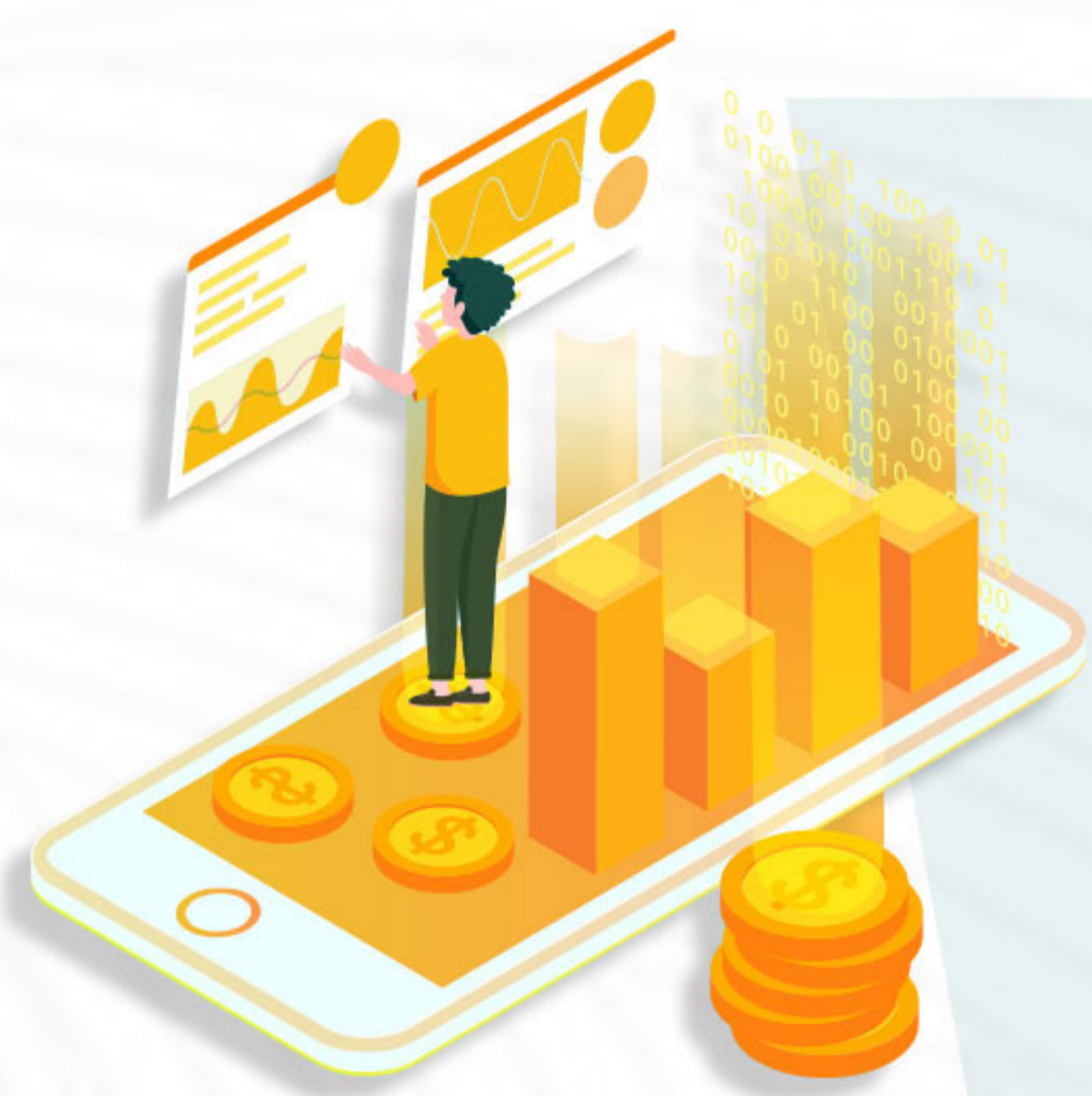


选择CWG 进行股票CFD交易

保证金交易

保证金交易， $\text{保证金} = \text{价格} \times \text{合约量} \times \text{保证金比例}$

例如：特斯拉 TSLA 现价540，合约量10 保证金比例是0.1，保证金计算如下：
 $540 \times 10 \times 0.1 = 540\text{USD}$



杠杆交易

杠杆交易，您可以随意选择股票的买卖数量，只需支付交易总额的一部分即可开仓，剩余大部分资金由CWG来支付。

差价交易

差价交易，无手续费，0佣金，您还可利用差价合约交易股票，以股票涨跌为标的，CWG股票CFD做空功能使下跌行情与上涨行情一样都是投资良机！



严格监管

严格监管，在CWG Markets的运营管理中，我们始终以全球监管条例严格要求自己，CWG达到严格的财务标准并且按照要求定期向我们的监管机构汇报。

资金安全

资金安全，客户资金存入隔离银行，安全托管、存取安全，急速出入金，CWG Markets从未失约！



| SYMBOL | DESCRIPTION | MIN LOT SIZE | MAX LOT SIZE | MARGIN RATE |
|--------|--|--------------|--------------|-------------|
| KMB | Kimberly-Clark Corp | 1 | 60 | 0.1 |
| KMI | Kinder Morgan Inc | 1 | 460 | 0.15 |
| KO | Coca-Cola Co | 1 | 160 | 0.05 |
| KR | Kroger Co | 1 | 350 | 0.2 |
| LB | L Brands Inc | 1 | 400 | 0.1 |
| LHX | L3Harris Technologies Inc | 1 | 40 | 0.15 |
| LLY | Eli Lilly & Co | 1 | 60 | 0.1 |
| LMT | Lockheed Martin Corp | 1 | 20 | 0.1 |
| LOW | Lowe's Cos Inc | 1 | 80 | 0.1 |
| LVS | Las Vegas Sands Corp | 1 | 140 | 0.1 |
| M | Macy's Inc | 1 | 610 | 0.1 |
| MA | MasterCard Inc | 1 | 30 | 0.1 |
| MCD | McDonald's Corp | 1 | 40 | 0.05 |
| MCO | Moody's Corp | 1 | 30 | 0.1 |
| MDT | Medtronic Plc | 1 | 80 | 0.1 |
| MET | Metlife Inc | 1 | 190 | 0.1 |
| MMC | Marsh & McLennan Cos | 1 | 80 | 0.1 |
| MMM | 3M Co | 1 | 60 | 0.05 |
| MO | Altria Group Inc | 1 | 210 | 0.1 |
| MPC | Marathon Petroleum Corp | 1 | 170 | 0.15 |
| MPLX | MPLX LP | 1 | 440 | 0.15 |
| MRK | Merck & Co Inc | 1 | 110 | 0.05 |
| MRO | Marathon Oil Corp | 1 | 860 | 0.1 |
| MS | Morgan Stanley | 1 | 170 | 0.1 |
| NEE | Nextera Energy Inc | 1 | 30 | 0.1 |
| NEM | Newmont Goldcorp Corp | 1 | 220 | 0.1 |
| NKE | Nike Inc | 1 | 100 | 0.1 |
| NOC | Northrop Grumman Corp | 1 | 20 | 0.1 |
| NOW | ServiceNow Inc | 1 | 20 | 0.15 |
| NSC | Norfolk Southern Corp | 1 | 40 | 0.1 |
| ORCL | Oracle Corp | 1 | 180 | 0.1 |
| OXY | Occidental Petroleum Corp | 1 | 240 | 0.1 |
| PEG | Public Service Enterprise Group / PSEG | 1 | 170 | 0.1 |
| PFE | Pfizer Inc | 1 | 260 | 0.1 |
| PG | Procter & Gamble Co | 1 | 80 | 0.05 |
| PGR | Progressive Corp | 1 | 110 | 0.1 |
| PLD | Prologis Inc | 1 | 100 | 0.15 |
| PM | Philip Morris International | 1 | 110 | 0.1 |
| PNC | PNC Financial Services Group | 1 | 60 | 0.1 |
| PRU | Prudential Financial Inc | 1 | 100 | 0.1 |
| PSA | Public Storage | 1 | 40 | 0.2 |
| PSX | Phillips 66 | 1 | 110 | 0.15 |
| RACE | Ferrari NV | 1 | 50 | 0.2 |
| RF | Regions Financial Corp | 1 | 600 | 0.2 |
| ROP | Roper Technologies Inc | 1 | 20 | 0.15 |
| S | Sprint Corp | 1 | 1170 | 0.1 |
| SCHW | Schwab (Charles) Corp | 1 | 200 | 0.1 |
| SHW | Sherwin-Williams Co | 1 | 10 | 0.15 |
| SLB | Schlumberger Ltd | 1 | 290 | 0.1 |
| SO | Southern Co | 1 | 140 | 0.1 |
| SPG | Simon Property Group Inc | 1 | 70 | 0.1 |
| SPGI | S&P Global Inc | 1 | 30 | 0.1 |
| SPOT | Spotify Technology SA | 1 | 60 | 0.15 |
| SQ | Square Inc - A | 1 | 120 | 0.2 |
| SRE | Sempra Energy | 1 | 60 | 0.15 |
| STZ | Constellation Brands Inc - Class A | 1 | 40 | 0.2 |
| SYK | Stryker Corp | 1 | 40 | 0.15 |
| SYY | Sysco Corp | 1 | 130 | 0.1 |
| T | AT&T Inc | 1 | 260 | 0.1 |
| TGT | Target Corp | 1 | 80 | 0.1 |
| TJX | TJX Companies Inc | 1 | 160 | 0.15 |
| TMO | Thermo Fisher Scientific Inc | 1 | 20 | 0.15 |
| TRV | The Travelers Companies Inc | 1 | 70 | 0.1 |
| TWTR | Twitter Inc | 1 | 280 | 0.15 |
| UA | Under Armour Inc - Class C | 1 | 660 | 0.1 |
| UBER | Uber Technologies Inc | 1 | 240 | 0.15 |
| UNH | UnitedHealth Group Inc | 1 | 30 | 0.1 |
| UNP | Union Pacific Corp | 1 | 50 | 0.1 |
| UPS | United Parcel Service Inc | 1 | 90 | 0.1 |
| USB | U.S. Bancorp | 1 | 180 | 0.1 |
| V | Visa Inc | 1 | 40 | 0.1 |
| VFC | VF Corp | 1 | 120 | 0.15 |
| VLO | Valero Energy Corp | 1 | 110 | 0.1 |
| VMW | VMware Inc - Class A | 1 | 60 | 0.15 |
| VZ | Verizon Communications Inc | 1 | 170 | 0.05 |
| WBA | Walgreens Boots Alliance Inc | 1 | 180 | 0.1 |
| WDAY | Workday Inc - Class A | 1 | 50 | 0.2 |
| WFC | Wells Fargo & Co | 1 | 200 | 0.1 |
| WM | Waste Management Inc | 1 | 80 | 0.15 |
| WMB | Williams Cos Inc | 1 | 460 | 0.1 |
| WMT | Walmart Inc | 1 | 80 | 0.05 |
| XEL | Xcel Energy Inc | 1 | 140 | 0.15 |
| XOM | Exxon Mobil Corp | 1 | 160 | 0.05 |
| YUM | Yum! Brands Inc | 1 | 90 | 0.1 |
| ZTS | Zoetis Inc | 1 | 60 | 0.15 |

| | | | |
|---------------|-----|---------------|------|
| CURRENCY | USD | DECIMAL PLACE | 2 |
| CONTRACT SIZE | 10 | TICKSIZE | 0.01 |

Trading Hours in GMT +3
US Shares / Mon-Fri/ Mon to Fri16:30-23:00

Maximum lot size for US Shares is based on order size is 100,000 USD Nominal
The maximum lot size for US and HK shares will be calculated periodically and updated to MT5 as share prices move.

Margin:Price*Volume*Margin Rate

